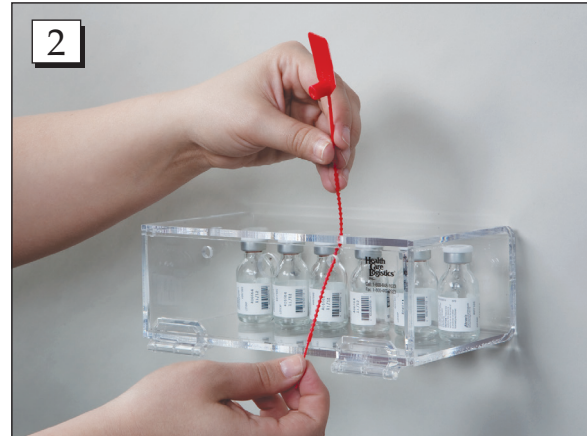


# INSTRUCTIONS FOR Fast Entry Security Box (#3751-01)

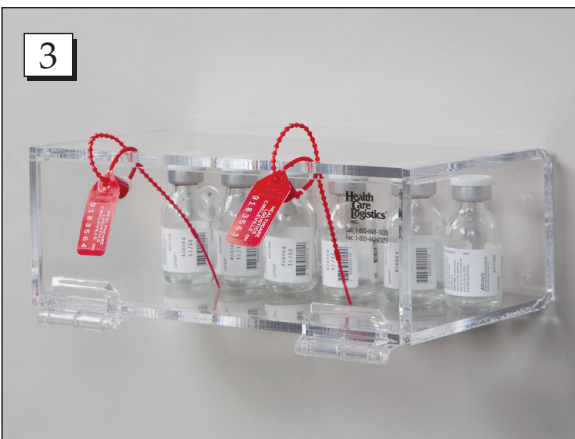
**NOTE:** Be sure to select the appropriate mounting hardware to ensure safe and reliable use. Mount hardware through a stud, blocking or rigid structure where possible during installation.



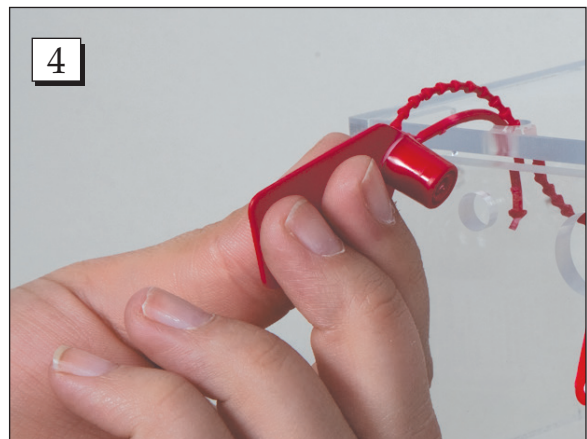
**Step 1.** Attach the security box to the desired area using the two screws.



**Step 2.** Place the meds that you want to have fast access to in an emergency into the box. Take two security seals and loop them through the holes in the box and the holes in the door. Pull the seals tight so that the lid is securely closed.



**Step 3.** Your box should look like this. It is now stocked with commonly used injectables or meds and ready for an emergency situation



**Step 4.** For removal of the injectables/meds in a code simply twist and pull the seals to break them and open the door.

Call Free 1.800.848.1633 • Fax Free 1.800.447.2923  
Web: GoHCL.com • Email: hcl@GoHCL.com