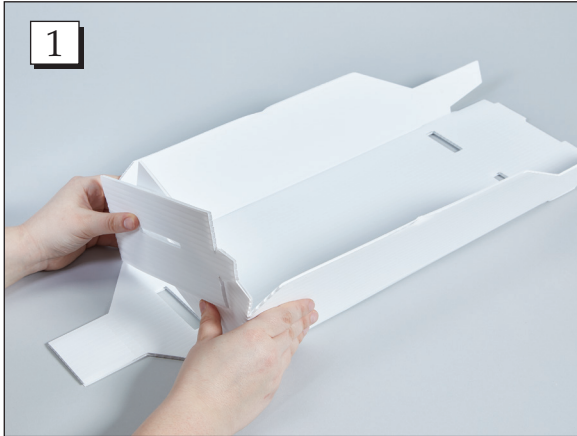


# INSTRUCTIONS FOR Corrugated Plastic Caddies (#9070-9076)



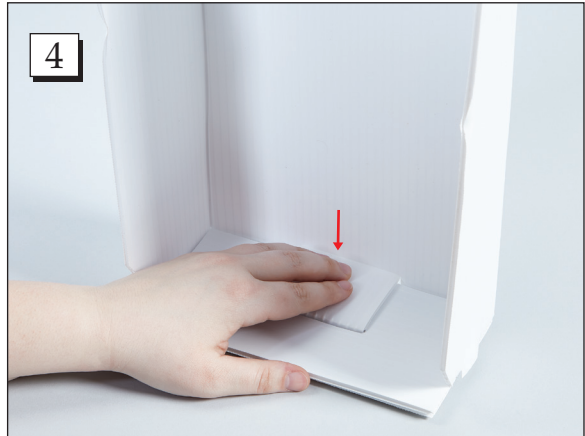
**Step 1.** Lay the caddy flat so the three larger flaps are your starting point. Fold the right side flap in and then the slotted left side flap.



**Step 2.** Insert the tongue attached to the left side flap into the slotted groove on the right corner of the caddy.



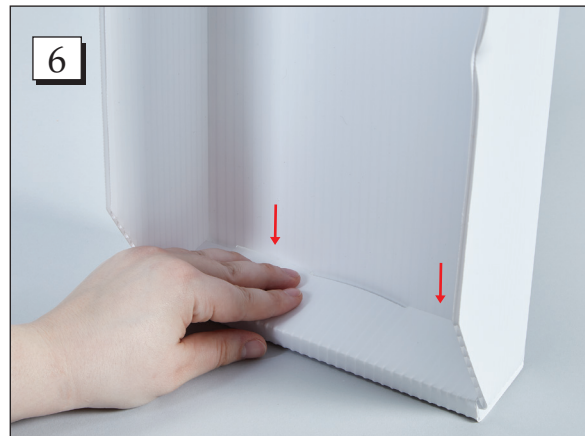
**Step 3.** Insert the tongue attached to the center flap into the slotted groove located in the center of the caddy. Once the tongue is inserted into the groove, fold it over toward the bottom of the caddy.



**Step 4.** Flip the caddy up on edge and insert the folded tongue into the groove located in the bottom of the caddy.



**Step 5.** Turn the caddy 180°. Fold the left flap in and then the right flap.



**Step 6.** Fold the center flap over the left and right flaps and insert the small tongues into the grooves located in the bottom of the caddy.