

INSTRUCTIONS FOR

Stainless Steel Tables (#19100)

Parts List:

Top (1)

Shelf (1)

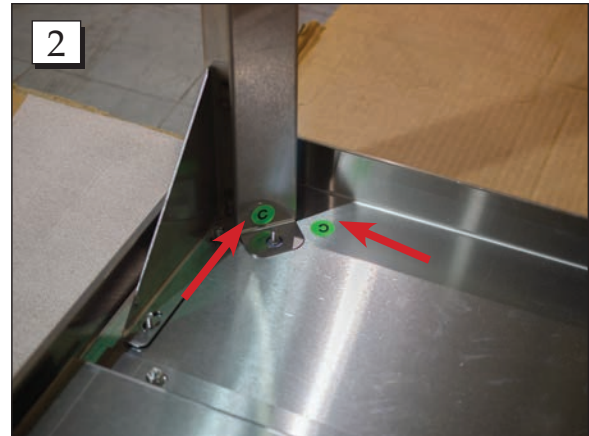
Legs (6)

Button-Head Screws (18)

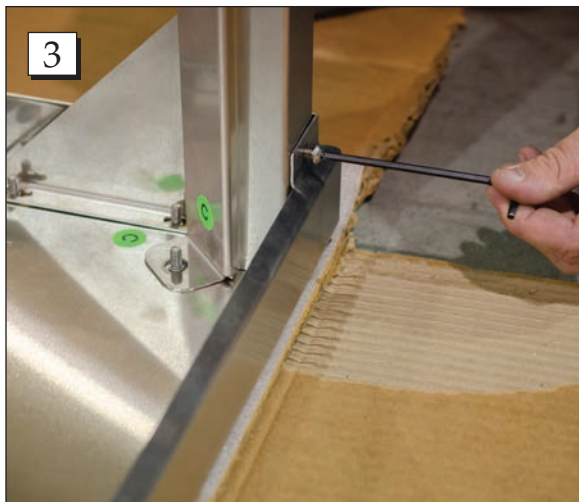
Lock Nuts (12)



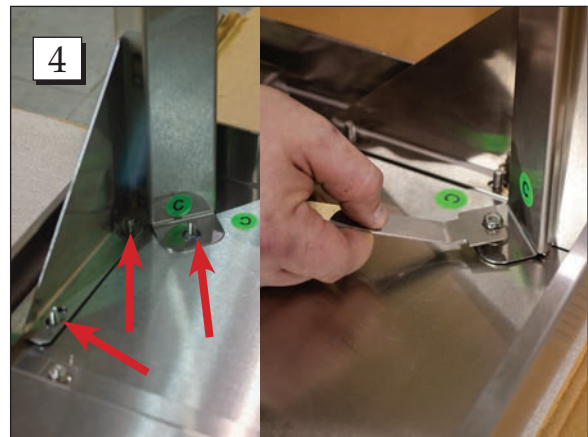
Step 1. Start with the top marked "A" laying upside down on the box it was delivered in. Note: We suggest working within the delivery box to prevent scratching the top of the table.



Step 2. Starting at the corners marked "C", install the corresponding legs marked "C".



Step 3. Place a button head screw on the outside of the leg. Tighten the button head screws with the provided Allen wrench.



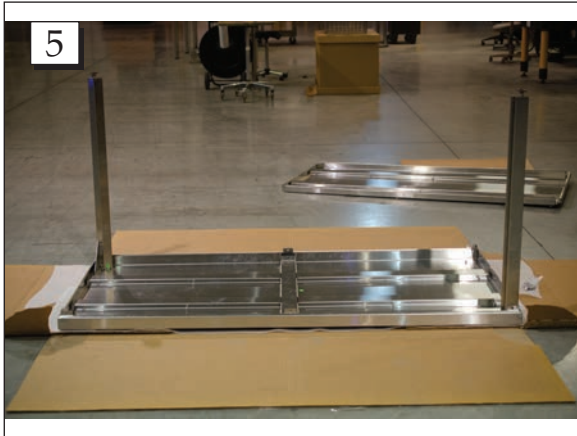
Step 4. Each corner requires three lock nuts to secure the leg supports. Tighten the lock nuts with the provided wrench.

Call Free: 1.800.848.1633 • Fax Free: 1.800.447.2923

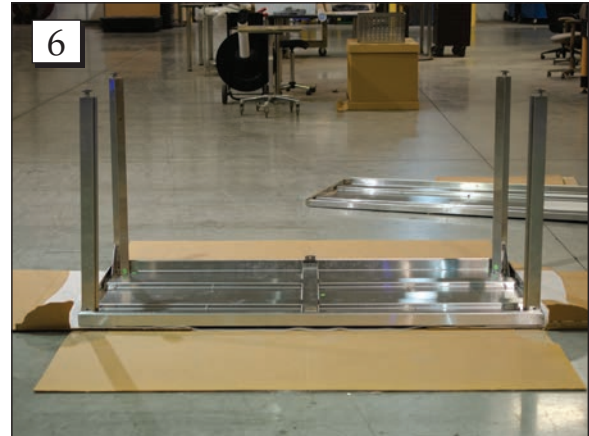
Web: GoHCL.com • Email: hcl@GoHCL.com

INSTRUCTIONS FOR

Stainless Steel Tables (#19100)



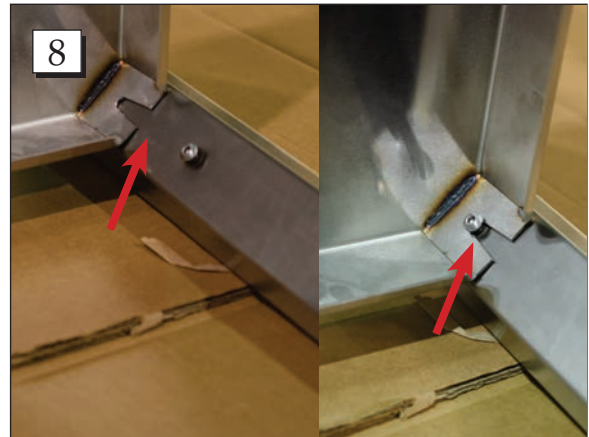
Step 5. Table top with "C" legs installed.



Step 6. Repeat steps 2-4 on legs marked "D".



Step 7. Turn the table on its side and place the shelf marked "B".



Step 8. Slide the shelf into place.

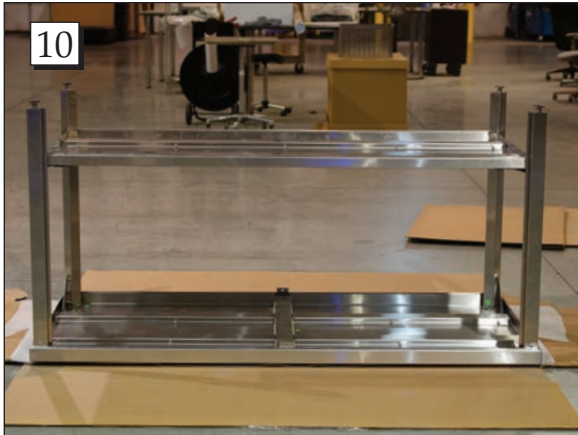


Step 9. Tighten the button head screws on each leg with the provided Allen wrench.

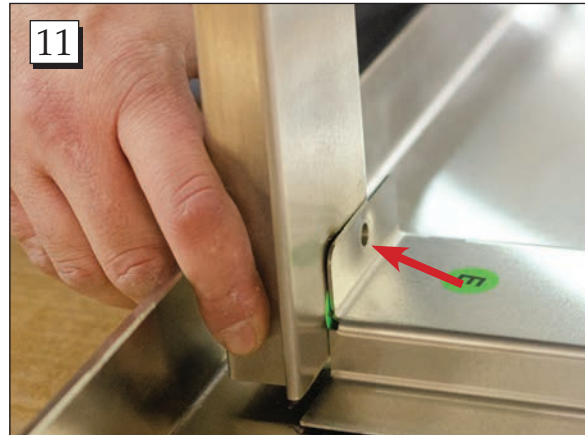
Call Free: 1.800.848.1633 • Fax Free: 1.800.447.2923
Web: GoHCL.com • Email: hcl@GoHCL.com

INSTRUCTIONS FOR

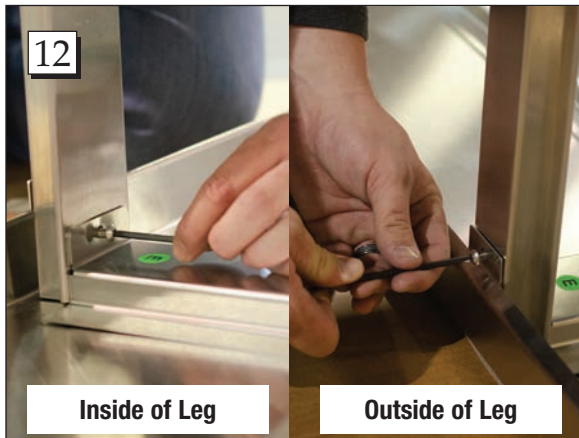
Stainless Steel Tables (#19100)



Step 10. Flip the table on its top.



Step 11. To install the middle legs marked "E", slide the leg into place.



Step 12. Secure the middle legs to the top with a button head screw on the inside and outside of each leg.



Step 13. Then secure the middle legs to the shelf with one button head screw on the inside of the leg.



Call Free: 1.800.848.1633 • Fax Free: 1.800.447.2923
Web: GoHCL.com • Email: hcl@GoHCL.com