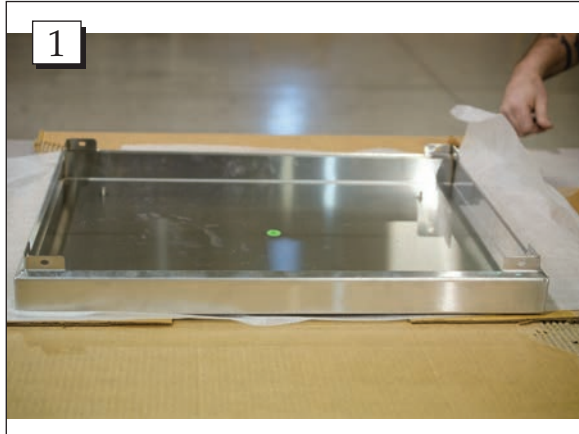
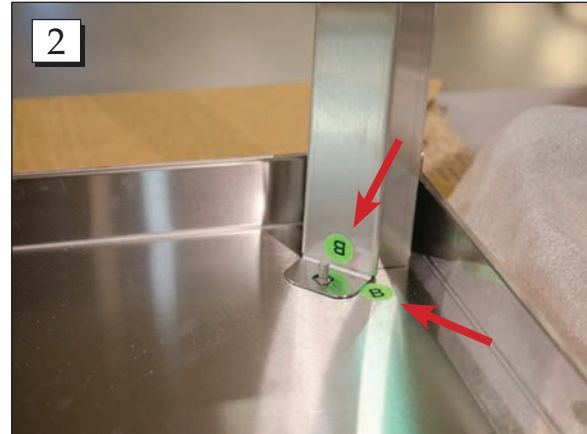


INSTRUCTIONS FOR Stainless Steel Tables on Casters (#19102)

Parts List:
Top (1) Button-Head Screws (16)
Legs (4) Locking Nuts (4)
Short Support Bars (2) Swivel Casters (2)
Long Support Bars (2) Locking Casters (2)



Step 1. Start with the top marked "A" laying upside down on the box it was delivered in. Note: We suggest working within the delivery box to prevent scratching the top of the table.



Step 2. Starting at the corners marked "B", install the corresponding legs marked "B".



Step 3. Place two button head screws on the outside of the leg. Tighten the button head screws with the provided Allen wrench.



Step 4. Place one lock nut on the inside of the leg. Tighten the lock nut with the provided wrench.

Call Free: 1.800.848.1633 • Fax Free: 1.800.447.2923
Web: GoHCL.com • Email: hcl@GoHCL.com

INSTRUCTIONS FOR Stainless Steel Tables on Casters (#19102)



Step 5. Place the short support bars marked "D".



Step 6. Secure each side of the short support bar with a button head screw. Tighten the button head screws with the provided Allen wrench.



Step 7. Repeat steps 5-6 on the other short support bar marked "D".



Step 8. Place the long support bars marked "C".



Step 9. Secure each side of the long support bar with a button head screw. Tighten the button head screws with the provided Allen wrench.



Step 10. Repeat steps 8-9 on the other long support bar marked "C".

Call Free: 1.800.848.1633 • Fax Free: 1.800.447.2923
Web: GoHCL.com • Email: hcl@GoHCL.com

INSTRUCTIONS FOR Stainless Steel Tables on Casters (#19102)



Step 11. Tighten the four casters into place.

