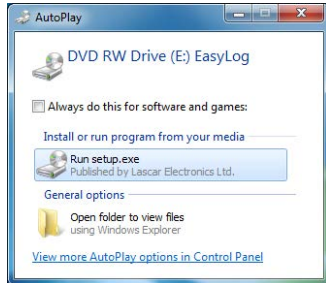


INSTRUCTIONS FOR

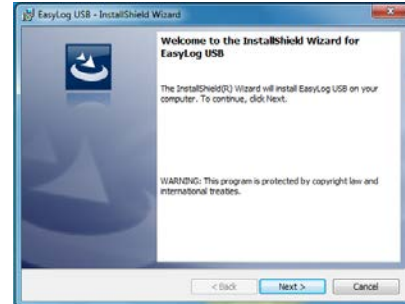
Temperature Data Logger w/ LCD Graphic Screen (#18966)

FIRST INSTALL YOUR SOFTWARE & USB DRIVER

Windows™ XP/VISTA/7



1. Download software from www.easylogusb.com, navigate and double click 'Setup.exe'.



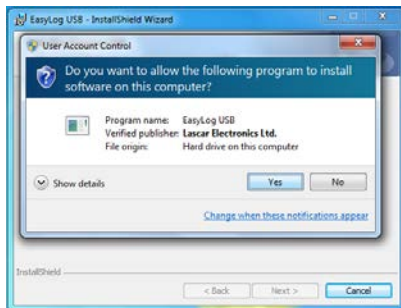
2. Click "Next"



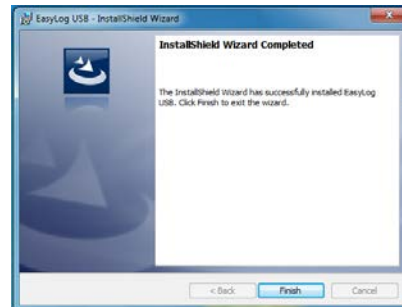
3. Read the "IMPORTANT NOTICE", select "I agree" and "Next"



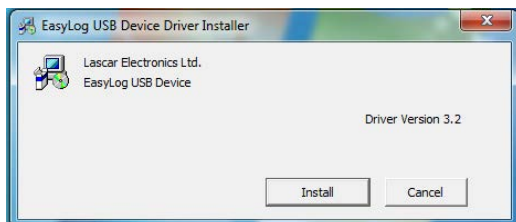
4. Click "Install"



5. Click "Yes"



6. Click "Finish"



7. Click "Install"



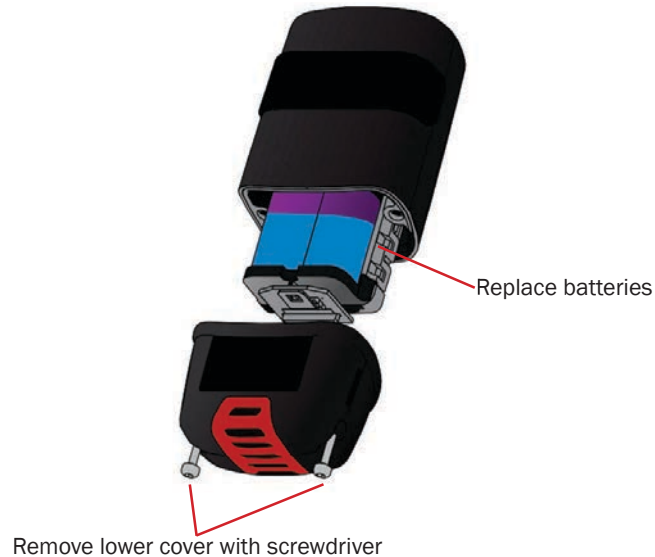
8. You have successfully installed the necessary software and driver for your EL-GFX data logger. An "EasyLog USB" icon will be placed on your desktop.

INSTRUCTIONS FOR


Temperature Data Logger w/ LCD Graphic Screen (#18966)

INSTALL YOUR BATTERY

Using a suitable screwdriver, untighten the two screws located at the base of the unit. Remove the lower portion of the housing to expose the battery bay. Install or replace batteries being sure to observe correct battery orientation.



YOUR DATA LOGGER IS READY FOR USE

- Ensure the battery is correctly installed.
- Connect the data logger to an available USB port on your PC using the micro USB cable provided.
- Double click on the EasyLog USB icon on your Windows™ desktop. This will load the configuration software. Setup the data logger for a new log, download a data logger that has been recording, view previously saved data in graph format and check the current status of the attached data logger (including the serial number).

EasyLog USB
- When setup is complete, the data logger should be disconnected from the USB port to begin recording. If you would like advice on how best to use the data logger for a particular application, please contact your nearest Lascar representative.
- **Do not leave your data logger connected to the USB port as this will cause some of the battery capacity to be lost.**

INSTRUCTIONS FOR

Temperature Data Logger w/ LCD Graphic Screen (#18966)

GETTING TO KNOW YOUR EL-GFX LOGGER



WHAT IS INCLUDED WITH YOUR DATA LOGGER?

- **USB Cover:** This USB port cover gives IP65 protection* to your data logger when fitted.
- **Mounting Clip:** The plastic mounting clip supplied allows wall mounting if required or to metal surfaces using the integrated magnet.
- **Micro USB Cable:** The micro USB cable allows connection to the PC for programming or data download. Use in conjunction with a USB wall adapter for continuous mains power.
- **2x ½ AA Batteries:** The unit is powered when the 2x ½ AA batteries are installed. Batteries are user replaceable when drained.



MENU BUTTON FUNCTIONS AND LED SCREEN INDICATION

<p>ARMED! Press button to start logging</p>	<p>DELAYED START Starts logging at 10:30:00 04/03/12</p>	<p>DELAYED START Starts logging when temperature above 36.2°C</p>	<p>START LOGGER</p> <ul style="list-style-type: none"> Loggers can be started immediately on a button press, delayed to a specific time or delayed to specific temperature reading 		<p>DISPLAY DATA</p> <ul style="list-style-type: none"> Data can be displayed on screen in tabular or graphical format You can switch between these views by pressing the gfx / txt buttons at the bottom-left of your screen 			
<p>ON-SCREEN ICONS</p> <ul style="list-style-type: none"> When this EasyLog cube is spinning in the top-left corner your logger is logging <ul style="list-style-type: none"> High/Low Alarm indicators are displayed at the top of your screen <ul style="list-style-type: none"> This icon indicates that your battery is low and will need to be replaced soon 				<p>STOP/START LOGGING & MUTE ALARM</p> <ul style="list-style-type: none"> By pressing the stop button, you can stop your logger, or view logger settings. If you have already stopped logging, this option will change to 'Start Logging'. The audible alarm can be muted from this menu if enabled 				
<p>Temperature Max 34.8°C Min 22.8°C Since 10:30 24/09/2012</p>			<p>SUMMARY DATA</p> <ul style="list-style-type: none"> Summary screen displays max/min log and last log. Reset function clears summary if required These screens can be reached by pressing the i button 			<p>LOCKED MODE</p> <ul style="list-style-type: none"> When in locked mode - an option during PC set-up - the logger can only be stopped and re-started using a PC loaded with the unit's configuration software 		
<p><input type="radio"/> Start Logging <input checked="" type="radio"/> Logger Settings</p>		<p>EasyLog USB Sample Rate 10s Low Alm 10°C High Alm 40°C S/N 000000001</p>		<p>LOGGER SETTINGS</p> <ul style="list-style-type: none"> To view a summary of the logger's settings press the stop button, then click 'Logger Settings' 			<p>POP-UP MESSAGES</p> <ul style="list-style-type: none"> A message will overlay the screen - if there is an issue - the next time a button is pressed, e.g. if the logger is running low on memory 	

Please note that screens may vary slightly depending on model.