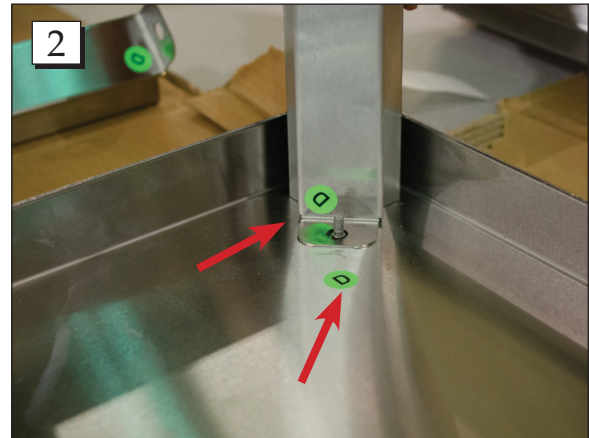


INSTRUCTIONS FOR Stainless Steel Table (#19101)

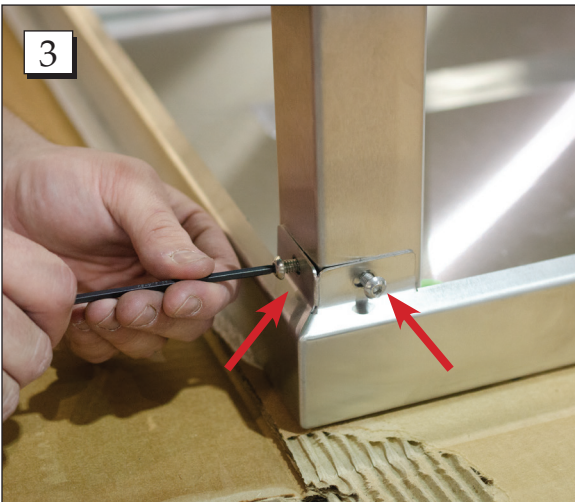
Parts List:
Top (1)
Shelves (2)
Legs (4)
Button-Head Screws (16)
Lock Nuts (4)
Washers (4)



Step 1. Start with the top marked "A" lying upside down on the box it was delivered in. Note: We suggest working within the delivery box to prevent scratching the top of the table.



Step 2. Starting at the corners marked "D", install the corresponding legs marked "D".



Step 3. Place 2 button head screws on the outside of the leg. Tighten the button head screws with the provided Allen wrench.



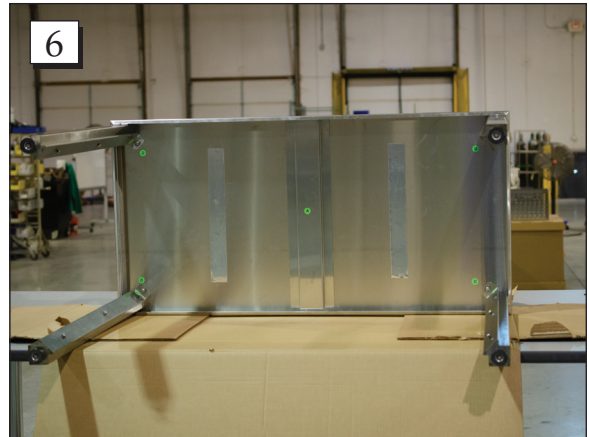
Step 4. Place 1 lock nut and 1 washer on the inside of the leg. Tighten the lock nut with the provided wrench.

Call Free: 1.800.848.1633 • Fax Free: 1.800.447.2923
Web: GoHCL.com • Email: hcl@GoHCL.com

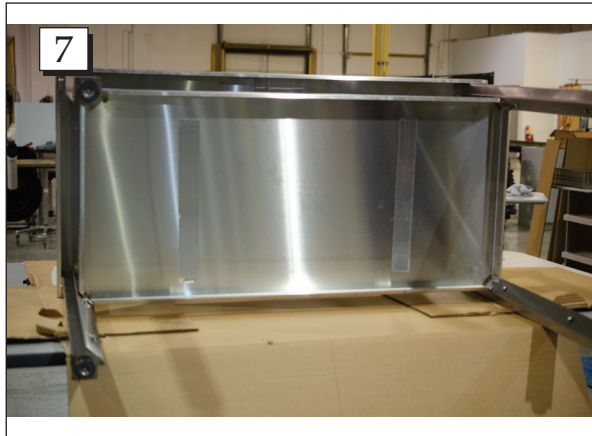
INSTRUCTIONS FOR Stainless Steel Table (#19101)



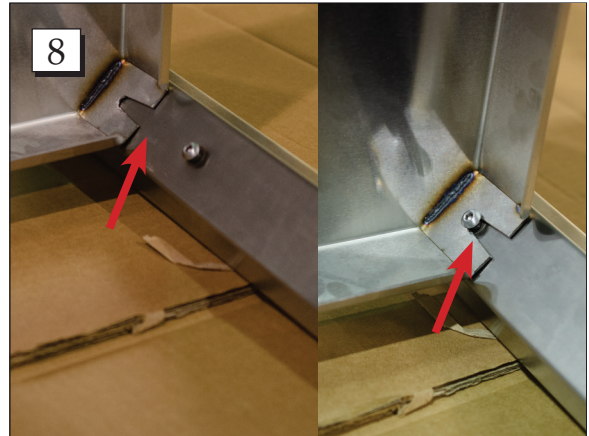
Step 5. Repeat steps 2-4 on the remaining legs marked "D".



Step 6. Turn the table on its side.



Step 7. Place the shelf marked "B".



Step 8. Slide the shelf into place.



Step 9. Tighten the button head screws on each leg with the provided Allen wrench.



Step 10. Repeat steps 7-9 on Shelf "C".

Call Free: 1.800.848.1633 • Fax Free: 1.800.447.2923
Web: GoHCL.com • Email: hcl@GoHCL.com