

ASSEMBLY INSTRUCTIONS FOR

(#18674, 18679) Wall Mount for Small & Large Box



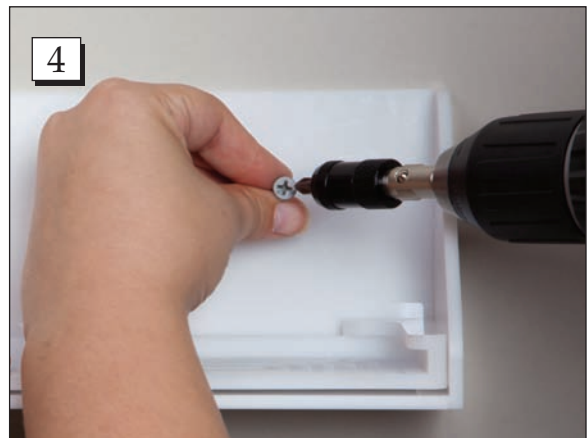
Step 1. Clean surface and peel the protective backing from the Receiving Base.



Step 2. Place the Receiving Base in the Wall Mount or on countertop, cart top or shelves.



Step 3. Press firmly for several seconds to attach the Receiving Base.



Step 4. Loosely drive the screw into the desired location on the wall or cabinet. (Screws are not provided.)

Call Free 1.800.848.1633 • Fax Free 1.800.447.2923
Web: GoHCL.com • Email: hcl@GoHCL.com

ASSEMBLY INSTRUCTIONS FOR

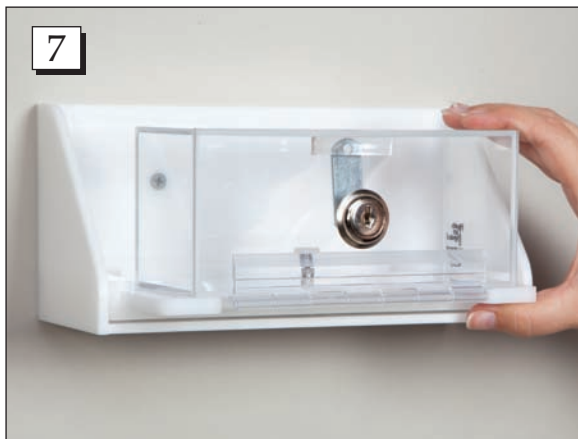
(#18674, 18679) Wall Mount for Small & Large Box



Step 5. Place a level on top of the Wall Mount.



Step 6. Once level, tighten screw into the remaining hole.



Step 7. Slide Box onto the Receiving Base.



Step 8. To remove, the box must be unlocked. Pull up of the white button in the middle of the locking box.

Call Free 1.800.848.1633 • Fax Free 1.800.447.2923
Web: GoHCL.com • Email: hcl@GoHCL.com