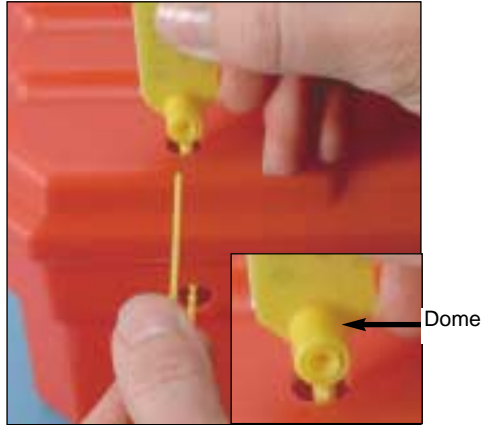


# Instructions for Applying Pull-Tight Security Seals to the 12" Med/Surg Box (#1372)



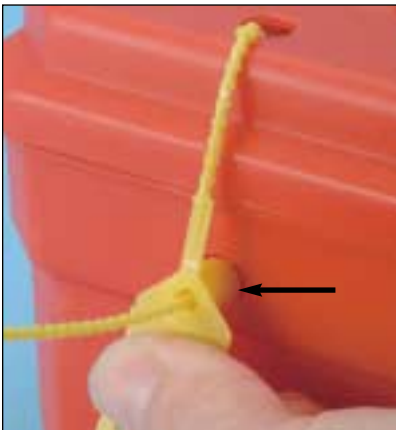
1. Insert the tail of the Pull-Tight seal through the top and bottom holes of the box.



2. Insert the tail of the Pull-Tight seal into the locking dome on the side marked "Enter".



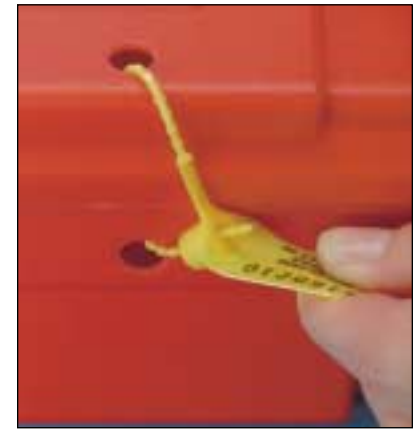
3. Pull the tail of the seal through the locking dome.



4. Pull the seal as tight as possible while guiding the dome of the seal into the bottom hole on the box.



5. The tab of the seal is designed to fit flush against the box. The tail can then be cut to the desired length. Repeat steps 1-5 for the second seal.



6. To remove the seal, simply twist and pull for easy removal.



© Health Care Logistics, Inc. 2001  
HCL-INTL is a registered trademark of Health Care Logistics, Inc.



Sheet #1372  
REV.110201

**Call Free 1 800 848 1633 or 888 HCL INTL® (425 4685) • Fax Free 1 800 447 2923**

International Call 740 477 1686 • International Fax 740 477 2923 • Web site <http://www.hcl-intl.com> • E-mail: [HCL@hcl-intl.com](mailto:HCL@hcl-intl.com)